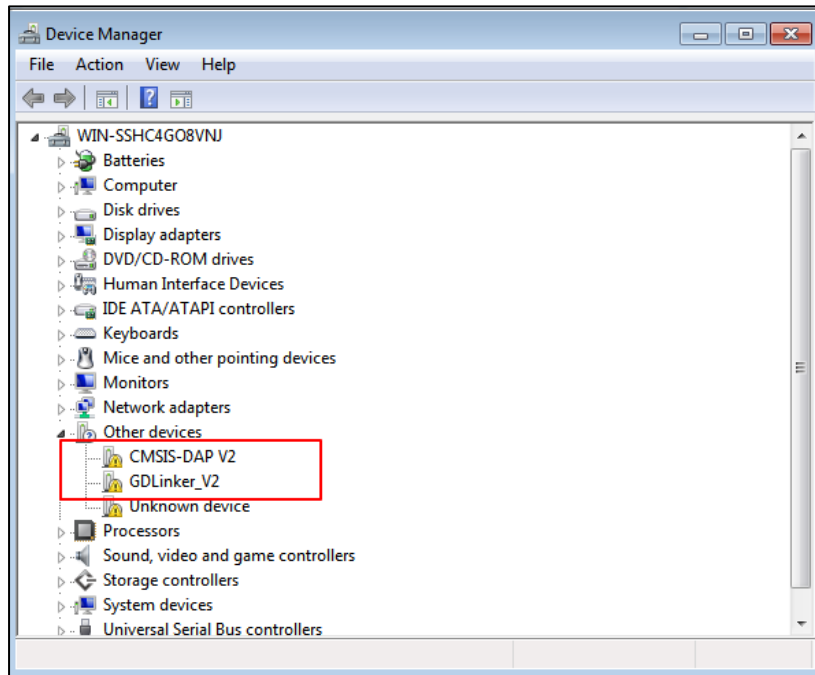
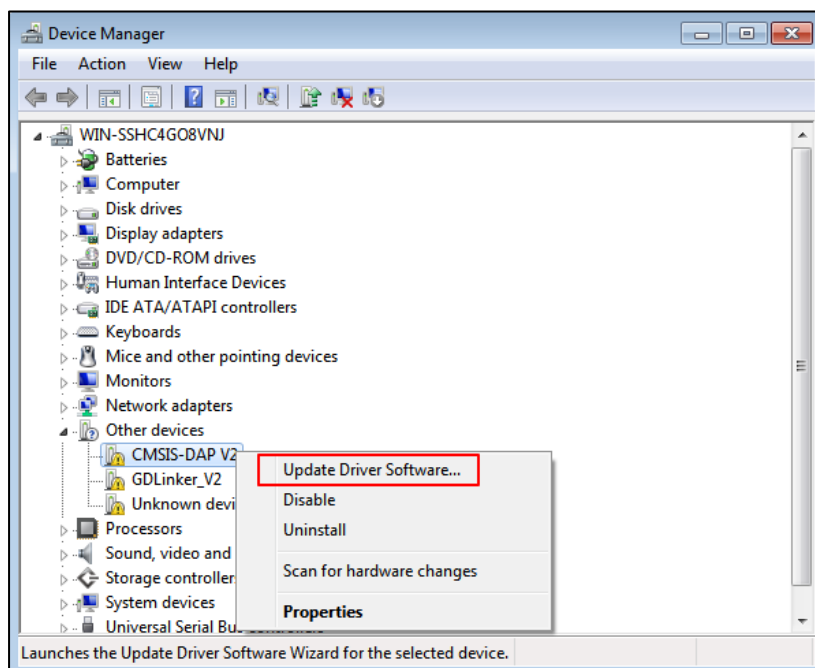


GD-Link V2 WIN7 driver installation introduction

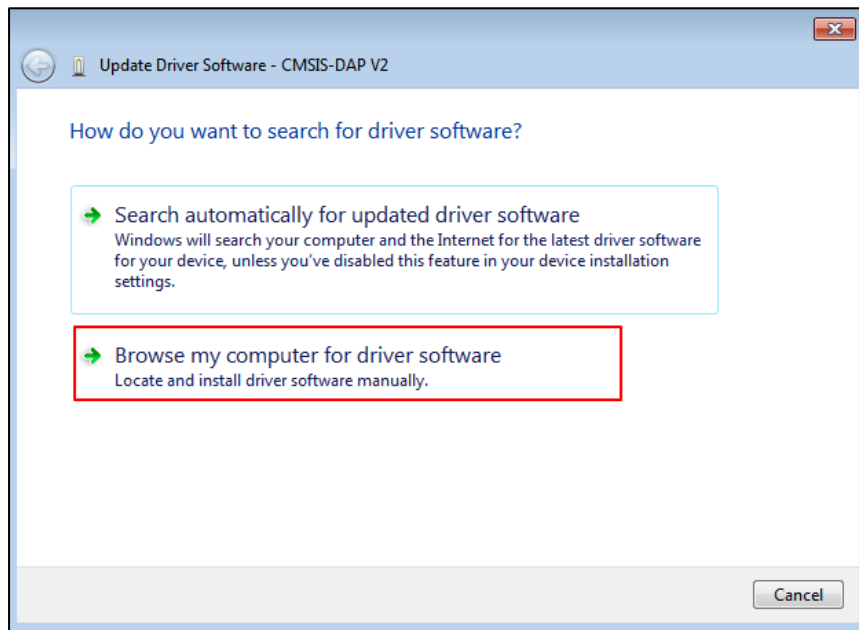
1. Insert GD-Link V2 into the computer's USB port.
2. Open Device Manager on your computer.
3. In "Other devices" category, you can see two unrecognized devices:
 - CMSIS-DAP V2 - Debugger interface device
 - GDLinker_V2 - Virtual serial port device



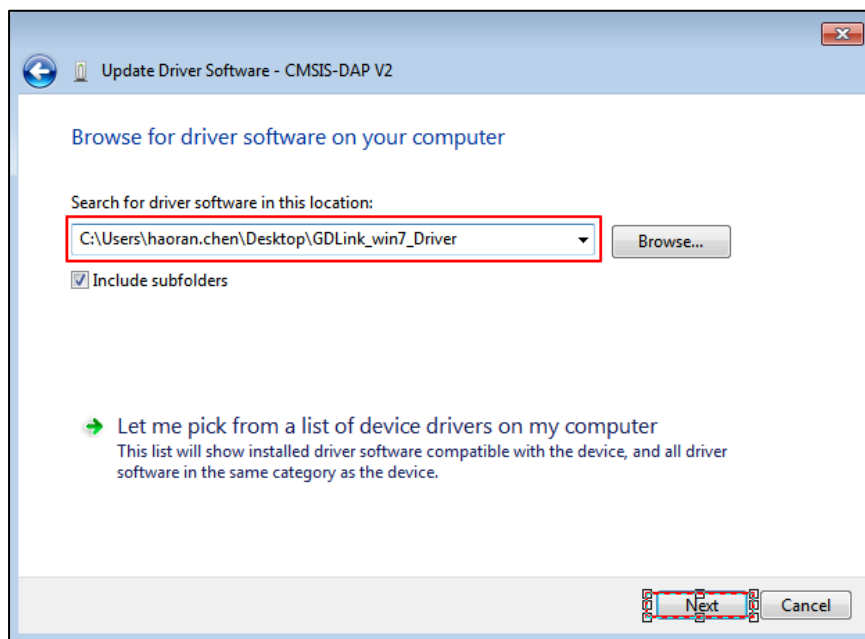
4. Right-click "CMSIS-DAP V2" → Select "Update Driver Software...".



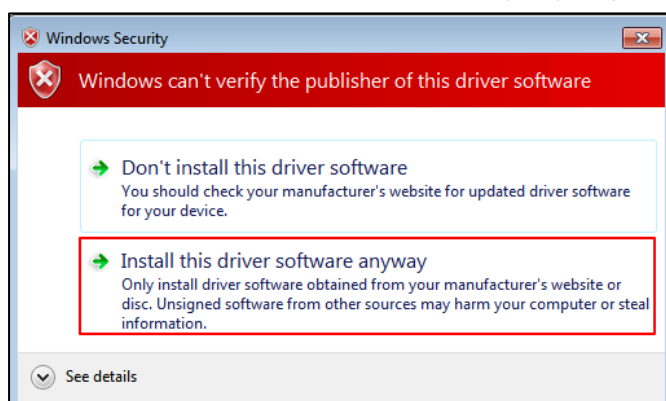
5. Select "Browse my computer for driver software".



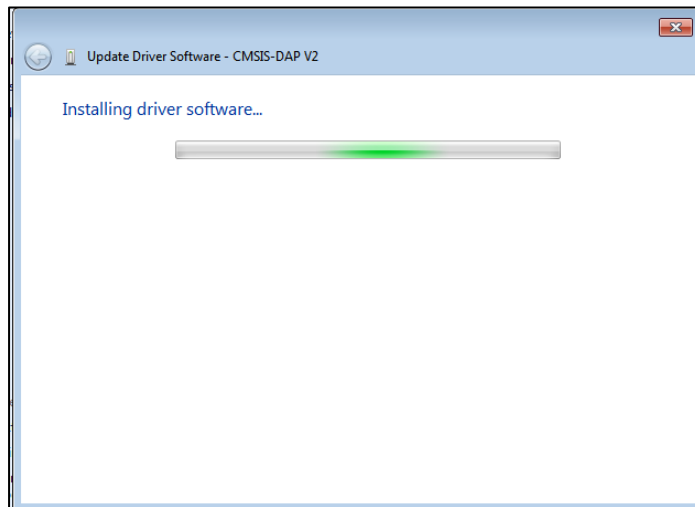
6. Browse to the downloaded GDLink_win7_Driver folder path → Click "Next".



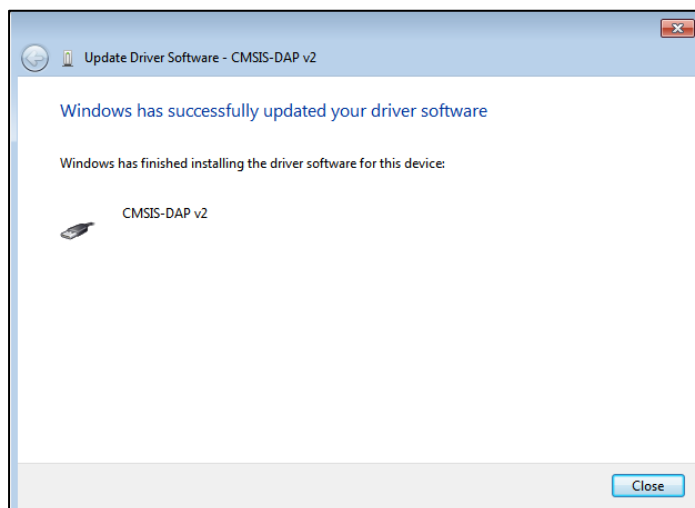
7. Select "Install this driver software anyway" (if security warning appears).



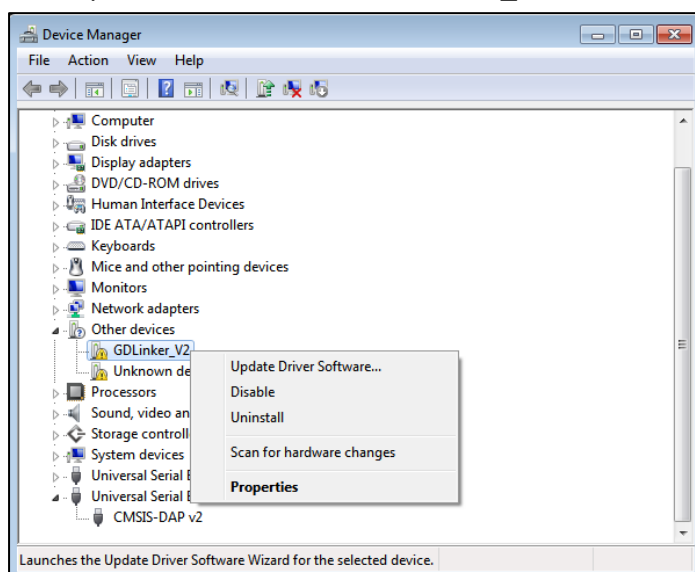
8. Wait for driver installation....

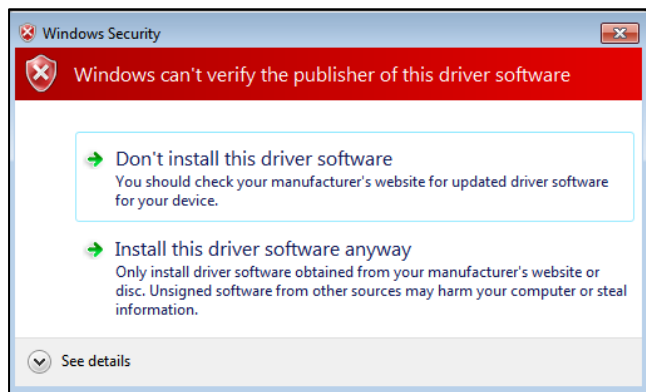
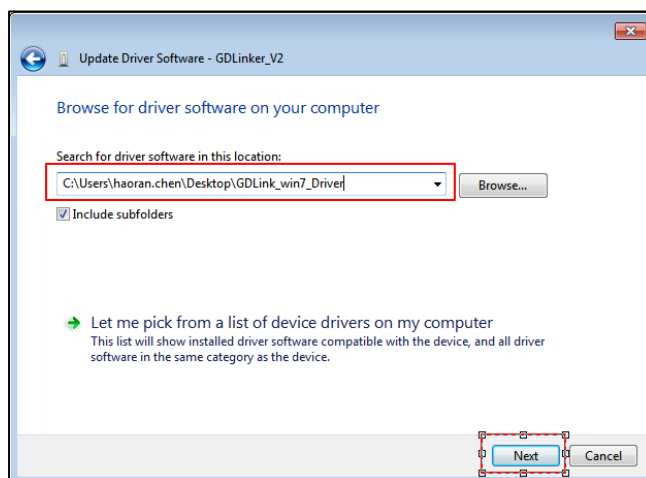
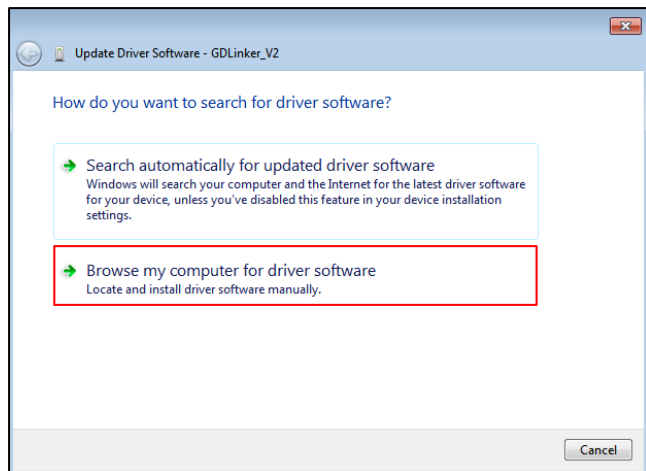


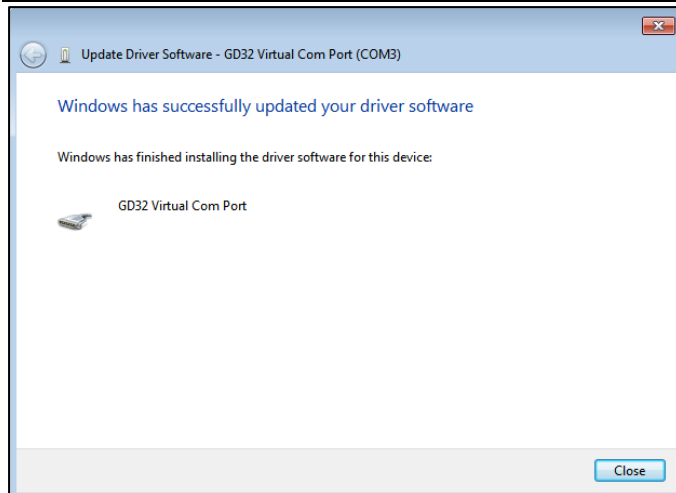
9. Installation complete when window shows "Windows has successfully updated your driver software".



10. Repeat Same Process for GDLinker_V2.







After installation, check in Device Manager:

- "Ports (COM & LPT)" - Should show GD32 Virtual Com port
- "Universal Serial Bus devices" - Should show CMSIS-DAP v2 related device
- Ensure no yellow warning signs or unknown devices remain

If displayed normally, user can use GD-Link for debugging and serial communication in your development environment.

